



**FAIRFIELD
HIGH SCHOOL**

"A forward
looking school
with traditional
values"

YEAR 9 CHOICES

Introduction

In this booklet you will find subject information sheets giving you details of all of the courses that we will be offering in Years 10 and 11 along with the possible career paths that they may lead to. We encourage students to follow a broad and balanced curriculum allowing you to pursue diverse opportunities and paths in further and higher education and training. The following subjects form part of the 'Core' Curriculum (meaning that they are compulsory for everyone).

- GCSE English
- GCSE English Literature
- GCSE Maths
- GCSE Double Science
- Core PE

The remaining subjects leave an element of choice, giving you the opportunity to study a further four subjects. **You must choose a subject from each option block.** We offer GCSEs, BTECs and Cambridge National Certificate. The BTEC is a vocational course that is assessed largely but not exclusively through coursework and practical assignments. BTECs offered at Fairfield are Level 2 Qualifications, equivalent to **one** GCSE. Cambridge Level 2 Nationals, also equivalent to **one** GCSE, are vocationally related qualifications that take an engaging, practical and inspiring approach to learning and assessment. They are industry relevant and geared to key sector requirements. They are assessed by both internal assessments and external exams. A combination of BTEC, Cambridge National and GCSE qualifications can be taken. You need to ensure that the post 16 provider you wish to attend will accept the qualifications you choose.

This year we are offering a Key Skills Certificate. It is flexible and we will tailor it to the students accepted on to the course. There will be a number of Level 1 qualifications undertaken as part of this course. Numbers will be limited to 14 students.

- Level 1 Qualifications are graded from Grade 1 to Grade 3
- Level 2 Qualifications are graded from Grade 4 to Grade 9

The English Baccalaureate is increasingly important for many further and higher education courses. It consists of the following five subject areas:

- English
- Maths
- Science
- History OR Geography
- Spanish OR French

To achieve the English Baccalaureate you will need to gain passes at **Grade 5 or above in the 5 GCSE subject areas** listed above. **We strongly recommend that all students consider this when making their choices from the option blocks.**

We aim to try and tailor or personalise your curriculum as far as we can, however some subject combinations may not be possible.

How do I choose?

We believe that a three way conversation between you, your teachers and your parents or carers is the best way to ensure that you make the right choices about which courses to study. In the following weeks, you will have a short one to one interview with Mr Lloyd, Ms Conway or Mr Kelly to discuss your preferred choices and to ask any further questions about the options and your subject choices.

Be aware that there are some forbidden combinations, please see the notes section below for further information.

What happens next?

Following this an initial list of subjects that you would like to take will be drawn up. This list will be discussed with subject teachers and any recommendations or adjustments will then be discussed with you (and possibly your parent/carer at this stage).

How are parents/carers involved?

Towards the end of the spring term a list of your subject choices will be sent home to parents/carers for them to discuss with you. If there are any concerns or problems parents/carers can then arrange to meet with a member of staff to discuss these concerns with us and you. At this stage it is still possible to change your mind. However, once you have started to study any of these courses it is very difficult and in many cases simply not possible to change your mind, making it important to get your choices right first time!

We will do our best to ensure that you have the opportunity to study courses which you enjoy and in a way that will be successful.

- You should be aware that **some courses may not run if there are too few students** to make them viable in terms of cost or staffing and very occasionally a subject has been oversubscribed meaning students **cannot study their first choice of subject**.
- If a course is oversubscribed, students will have given a second choice from their initial choices questionnaire and they will be placed in that subject instead.
- **We may also change exam courses or qualifications** if we feel that it would be more beneficial for students.

Finally if we deem students to be needing extra support in English, Maths or Science **we reserve the right to withdraw them** from any other subject area in order to put in extra English, Maths or Science support.

We hope that you will enjoy thinking about your future plans and discussing them with us, so that we can all work together to support you in achieving your own personal best.



Sue Gaston
Head Teacher

The Option Blocks

Below are the options blocks. ***You must choose ONE subject from EACH option block. All subjects are GCSEs unless otherwise stated.***

| <i>Block A</i> | <i>Block B</i> | <i>Block C</i> | <i>Block D</i> |
|------------------------|-----------------------|----------------------------|-----------------------|
| Spanish | BTEC Animal Care | Food and Nutrition | BTEC Sport |
| French | Geography | Cambridge National I-Media | BTEC Performing Arts |
| BTEC Construction | History | BTEC Sport | Triple Science |
| BTEC Animal Care | BTEC Construction | Geography | Design and Technology |
| Art and Design | Music | History | Geography |
| Key Skills Certificate | | Art and Design | Textiles |

Notes:

***1** You can only choose **Art and Design** in one option block. For example if you choose it in Block A, you cannot choose it again in block C. This principle applies to any subject which is in more than one option block (Animal Care, Construction, Geography, History, and Sport)

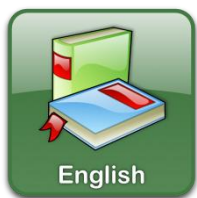
***2** Students cannot study both Construction and DT

***3** Students cannot study both Art and Textiles

Please note:

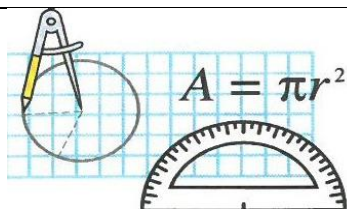
In order to study for an A Level in any Science based subject at Hereford Sixth Form College students will need to achieve a Grade 6 or above in their chosen GCSE Sciences (either Core and Additional or the Triple Sciences). **Double Science (Core and Additional) is accepted by the Sixth Form College in order to study Science at A Level.**

Please note that some of these courses may not run if we have an insufficient number of students wishing to take them OR students may not get their first choice if a subject is oversubscribed.
All courses are offered subject to staffing and resources.



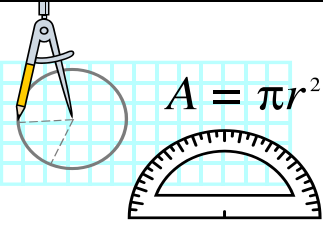
GCSE English Language and GCSE English Literature

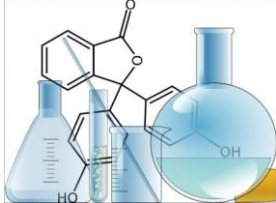
| | |
|----------------------------------------|-------------------------------------------------------------------------------------------------------------------------------------------------------------------------------------------------------------------------------------------------------------------------------------------------------------------------------------------------------------------------------------------------------------------------------------------------------------------------|
| Curriculum Area | English (Core subject) |
| Teacher in charge | Ms Emma Worsfold eworsfold@gvsc.org.uk |
| Course followed | Eduqas GCSE English Language and Eduqas GCSE English Literature You have the opportunity to study two GCSEs in English: English Language and English Literature. Employers, Further and Higher Educational establishments usually require a minimum Grade 4 in English (an old Grade C). As competition for places increases, Grade 5s and higher are required. Grade 6s are required to continue English Language, English Literature or MFL at A-Level. |
| What you will study | You will study a variety of texts including a Nineteenth Century novel, a Shakespearean play, modern and heritage poetry, a twentieth century play and a variety of non-fiction texts. You will also deliver a formal presentation as part of the spoken element of the course, as well as developing your creative writing skills. |
| How you will be assessed | Assessment is all through examination at the end of the course. Both GCSEs have two exam papers each. For the spoken element of the course, you will be assessed by your teacher and be awarded either a Pass, Merit or Distinction. This will then be moderated by the exam board. |
| You will get the opportunity to | Develop your written and verbal communication skills, which are essential for success in later life, and explore a variety of topical issues through literature, poetry and discussion. |
| Post 16 Courses: | A Level English Language, A Level English Literature, A Level Communication Studies, A Level Media Studies, A Level Film Studies. It will also help you with any essay-based subjects, such as History, Psychology and Law. |
| Careers: | Journalism, Administration, Law, Teaching, Advertising, Media, TV industry and just about everything else! Every employer needs staff that have excellent spoken and written communication skills. |

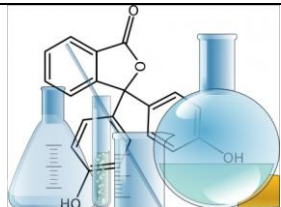


Mathematics

| | |
|------------------------------------------------|-------------------------------------------------------------------------------------------------------------------------------------------------------------------------------------------------------------------------------------------------------------------------------------------------------------------------------------------------------------------------------------|
| Curriculum Area | Mathematics (Core subject) |
| Teacher in charge | Mr S Waterhouse swaterhouse@gvsc.org.uk |
| Course followed | GCSE Mathematics (EDEXCEL) |
| What you will study | <ul style="list-style-type: none"> • Number • Algebra • Shape and Space • Handling Data |
| How you will be assessed | <p>This is a linear course, assessed by three external examinations at the end of the two year course.</p> <p>Each examination will last for 1 hour 30 minutes. You will be allowed to use a calculator for Paper 2 and Paper 3.</p> |
| You will get the opportunity to | Apply mathematics in real contexts; solve problems; use your reasoning skills and become confident with the many functional elements of mathematics. |
| Post 16 Courses: Careers: | <p>'A' Level Maths, Applied Maths and Statistics with degree courses in the same, as well as Management Sciences, Finance, Teaching, etc.</p> <p>Accountancy, financial analysis, meteorology, medicine, statistics, engineering, defence</p> <p>All careers and employers will require a good level of understanding of maths and the competition for the best jobs is fierce!</p> |

| | |
|----------------------------------------------------------------------------------|-----------------------------------------------------------------------------------------------------------------------------------------------------------------------------------------------------------------------------------------------------------------------------------------------------------------------------------------------------------------------------|
|  | <h2 style="text-align: center;">Further Mathematics</h2> |
| Curriculum Area | Mathematics (Core subject) |
| Teacher in charge | Mr S Waterhouse swaterhouse@gvsc.org.uk |
| Course followed | GCSE Further Mathematics (AQA) |
| What you will study | <ul style="list-style-type: none"> • Number • Algebra • Coordinate Geometry • Calculus • Matrix Transformations • Geometry |
| How you will be assessed | This is an OPTIONAL linear course, assessed by two external examinations at the end of the two year course. Each examination will last for 1 hour 45 minutes. You will be allowed to use a calculator for Paper 2. |
| You will get the opportunity to | Apply mathematics in real contexts; solve problems; use your reasoning skills and become confident with the many functional elements of mathematics. |
| Post 16 Courses: Careers: | A' Level Maths, Applied Maths and Statistics with degree courses in the same, as well as Management Sciences, Finance, Teaching, etc. Accountancy, financial analysis, meteorology, medicine, statistics, engineering, defence All careers and employers will require a good level of understanding of maths and the competition for the best jobs is fierce! |

| | |
|----------------------------------------------------------------------------------|---------------------------------------------------------------------------------------------------------------------------------------------------------------------------------------------------------------------------------------------------------------------------------------------------------------------------------------------------------------------------------------------------------------------|
|  | <h2 style="text-align: center;">Science</h2> |
| Curriculum Area | Science (Core subject) |
| Teacher in charge | Mrs E Kerr ekerr@gvsc.org.uk |
| Course followed | AQA Combined Science: Trilogy |
| What you will study | A combined Science course covering Chemistry, Physics and Biology. |
| How you will be assessed | All students will take six papers, two biology, two chemistry, and two physics. Each will assess different topics. All papers are 1 hour and 15 minutes. The papers are equally weighted - each is worth 16.7% of the final grade and is out of 70 marks. Question types will include: multiple choice, structured, closed short answer, and open response. |
| You will get the opportunity to | Learn about and experience it through practical work (a broad range of 21 st century Science). Work individually or in groups during practical work and investigations both in and out of the laboratory. Investigate biological, chemical and physical hypotheses using the scientific method and come to reliable conclusions using valid data. |
| Post 16 Courses: Careers: | GCSE Combined Science is designed to be accessible to all and to provide a general Science qualification for those who intend to take Science subjects at A-level, as well as those who do not. Level 3 Biology, Chemistry and Physics (A Level) Vocational Science at level 3 From botanist to astronaut, as a compulsory subject all employers will expect to see you with a Science qualification. |



Triple Science


GCSE Biology, Chemistry and Physics

| | |
|------------------------------------------------|---------------------------------------------------------------------------------------------------------------------------------------------------------------------------------------------------------------------------------------------------------------------------------------------------------------------------------------------------------------------------------------------------------------------------------------------------------------------------------|
| Curriculum Area | Science |
| Teacher in charge | Mrs E Kerr ekerr@gvsc.org.uk |
| Course followed | AQA GCSE course in Biology, Chemistry and Physics. Each Science counts for an individual grade awarded at the end of year 11. The triple science group study the same topics as the Combined Science Trilogy course, but in greater depth. |
| What you will study | You will follow each syllabus covering Chemistry, Physics and Biology in greater depth than the Combined Science: Trilogy course. |
| How you will be assessed | Each Science is assessed by two papers, each of which is 1 hour and 45 minutes. Each paper will assess knowledge and understanding from different topics. Questions will use clear and simple language to assess students only on their scientific ability. The papers are equally weighted. Each paper is worth 50% of the final grade for each GCSE, and is out of 100 marks. Question types will include multiple choice, structured, closed short answer and open response. |
| You will get the opportunity to | Gain all the experiences of the Combined Science: Trilogy course, but you will study the Sciences in greater depth. |
| Post 16 Courses: Careers: | Level 3 Biology, Chemistry and Physics (A Level) Triple Science is intended for those students with a particular interest in the sciences and perhaps intent on an academic career path studying a Science or medical subject at university. Triple Science GCSE is not compulsory in order to study separate sciences at A Level. |



GCSE Geography


| | |
|--------------------------------------------------------------|-------------------------------------------------------------------------------------------------------------------------------------------------------------------------------------------------------------------------------------------------------------------------------------------------------------------------------------------------------------|
| Curriculum Area | Humanities |
| Teacher in charge | Mrs H Rodgers hrodgers@gvsc.org.uk |
| Course followed | AQA Geography. It is equally divided between physical and human geography. The course includes field trips. |
| What you will study | <p>You will study three topics for both physical and human geography.</p> <p>Physical topics; challenge of natural hazards, the living world and physical landscapes in the UK.</p> <p>Human topics; urban issues and challenges, the changing economic world and the challenge of resource management.</p> |
| How you will be assessed | <p>At the end of the course there will be three externally marked exams.</p> <p>Paper 1 will assess the physical geographical knowledge and skills. (35% of marks)</p> <p>Paper 2 will assess the human geographical knowledge and skills. (35% of marks)</p> <p>Paper 3 will assess field work skills. (30% marks)</p> |
| You will get the opportunity to | Work individually, in pairs and groups. You will be involved in activities in and outside the classroom, gathering, researching and analysing data. You will use a range of computer skills including GIS, literacy and numeracy skills and will also be given the opportunity to be creative. You will take part in discussions and debates. |
| Post 16 Courses: Careers: | <p>A level Geography, Environmental Science, Geology and Leisure and Tourism courses.</p> <p>Oil industry, engineering, construction, environmental managing, Planning, Cartographer, GIS, Climatologist, Transport manager, Conservation, Emergency management, Demographer, Marketing, Estate/Land management, weather forecasting, the Armed Forces.</p> |

| | |
|-----------------------------------------------------------------------------------|----------------------------------------------------------------------------------------------------------------------------------------------------------------------------------------------------------------------------------------------------------------------------------------------------------------------------------------------------------------------------------------------------------------------------------------------------|
|  | <h2 style="text-align: center;">GCSE History</h2> |
| Curriculum Area | Humanities |
| Teachers in charge | Mr Emmett and Mr Giggie jemmett@gvsc.org.uk / cgiggie@gvsc.org.uk |
| Course followed | <p>AQA GCSE History</p> <p>Paper 1: Understanding the Modern World helps students to understand key developments and events in modern world history.</p> <p>Paper 2: Shaping the Nation enables students to understand key developments and events in the history of Britain.</p> |
| What you will study | <p>Our study of the modern world through a period will consider Germany 1890-1945: Democracy and Dictatorship. For a wider world depth study we will be looking at Conflict and Tension between East and West, 1945-1972. In our look at how Britain was shaped we will study the theme of Britain: Health and the people c.1000 to the present day. In considering the historic environment our focus will be on Norman England, c1066-c1100.</p> |
| How you will be assessed | <p>Assessment will be done through two end-of-course examinations.</p> |
| You will get the opportunity to | <p>Throughout the course you will learn good exam practice as well as analytical and evaluation skills that will benefit your studies in every subject. Also you will be able to look afresh at the world around you and understand it better as a result of an enhanced understanding of the past.</p> |
| Post 16 Courses: Careers: | <p>A-Level History, Sociology, Law, Psychology.</p> <p>Any! History is one of the most valued GCSE subjects as it teaches independent thinking and a willingness to question the world.</p> |



Spanish and French


| | |
|----------------------------------------------------------|----------------------------------------------------------------------------------------------------------------------------------------------------------------------------------------------------------------------------------------------------------------------------------------------------------------------------------------------------------------------------------------------------------------------------------------------------------------------------------|
| Curriculum Area | Modern Foreign Languages |
| Teacher in charge | Mrs S Price sprice@gvsc.org.uk |
| Course followed | AQA GCSE Full Course |
| What you will study | The four skills of listening, reading, speaking and writing and key themes such as, 'Identity and Culture', 'Local, National, International and Global Areas of Interest' and 'Current and Future Study and Employment'. |
| How you will be assessed | Four exams taken in Listening, Speaking (10-12 mins), Reading and Writing. Each exam is worth 25%; these exams are taken at the end of the course and will also involve translation questions. |
| You will get the opportunity to | Study not only the language, but also the culture and traditions of Spanish and French speaking countries. There may also be an opportunity to visit France or Spain. |
| Post 16 Courses: Careers: | <p>A Levels, Languages for Work, Conversational Languages.</p> <p>All employers value language skills very highly and there are increasing numbers of businesses that need languages to compete in global markets and to help them build upon links abroad.</p> <p>A language GCSE is also a requirement for entry into many universities, for a wide variety of subject areas. For example, History and Law.</p> <p>A language also contributes to the EBACC qualification.</p> |


| | |
|-----------------------------------------------------------------------------------|---------------------------------------------------------------------------------------------------------------------------------------------------------------------------------------------------------------------------------------------------------------------------------------------------------------------------------------------------------------------------------------------------------------------------------------------------------------------------------------------------------|
|  | <h2 style="text-align: center;">GCSE Music</h2> |
| Curriculum Area | Creative Arts |
| Teachers in charge | Miss M Sage and Ms R Gueye msage@gvsc.org.uk / rgueye@gvsc.org.uk |
| Course Followed | OCR GCSE Music |
| What you will study | <p>You will study three key elements:</p> <ul style="list-style-type: none"> • Performing (solo and ensemble) • Composing • Listening and appraising <p>The topics you will study are:</p> <ul style="list-style-type: none"> • Popular Music • Rhythms of the world • Film Music • Concerto Through Time <p>Each of these topics include the study of the key musical features of each style and the elements of music.</p> |
| How you will be assessed | <p><u>Controlled assessment</u></p> <p>You will need to produce:</p> <ul style="list-style-type: none"> • two performances (solo and ensemble) worth 30% • two compositions worth 30% <p><u>Exams</u></p> <ul style="list-style-type: none"> • listening exam at the end of Year 11 worth 40% |
| You will get the opportunity to | <p>This course is ideal for anyone who has musical skills and interests. You will work in groups and individually. You will work together in an atmosphere where the emphasis is on enjoyment combined with the development of practical and theoretical skills.</p> |
| Post 16 Courses: Careers: | <p>A Level Music / BTEC in Performing Arts</p> <p>There are many career possibilities ranging from performing and teaching to composing. Music as a qualification also helps students to develop a wide range of skills which are highly recognised in further education establishments and work placements. These include team work, self-discipline, risk taking and sustained effort.</p> |



Food Preparation and Nutrition

| | |
|------------------------------------------------------------------|------------------------------------------------------------------------------------------------------------------------------------------------------------------------------------------------------------------------------------------------------------------------------------------------------------------------------------------------------------------------------------------------------------------------------------------------------------------------------------------------------------------------------------------------------------------------------------------------------------------------------------|
| Curriculum Area | Creative Arts |
| Teacher in charge | Miss R Batner rbatner@gvsc.org.uk |
| Course followed | WJEC Eduqas Food Preparation and Nutrition |
| What you will study | <p>In Year 10 you will develop practical skills through the preparation of bread, cakes, biscuits, chilled desserts, soups and meat, fish and pasta dishes amongst others. You will also study the function of the ingredients used. You will investigate different food commodities and where food comes from. You will study in detail nutrition, diet and healthy eating.</p> <p>In Year 11 you will complete a practical assessment to plan, prepare, cook and present a selection of dishes. This includes a 3-hour practical examination. When this coursework is complete you will prepare for the written examination.</p> |
| How you will be assessed | <p>You will be assessed by two controlled assessment tasks. The first will be scientific food investigation and the second will be a food preparation assessment. Both of these will be worth 50% of your final mark.</p> <p>At the end of Year 11 there is a written examination based on your knowledge of; food commodities, nutrition, diet, science of food, provenance of food and food preparation. This is worth 50% of your final mark.</p> |
| You will get the opportunity to | Develop practical skills. You will become a confident and independent cook. Students on this course will use creativity to experiment and develop a love of good food and cooking. There are strong cross-curricular links with science and PE. |
| Post 16 Courses: Careers: | <p>'A' Levels in Food Technology, Home Economics and Food Science, Diploma and Further Diploma in Hospitality and Catering, Food and Drink - Young Apprenticeships.</p> <p>Food Technology, Food Science, Dietician, Nutritionist, Nursing, Food Journalism, Catering and many more.</p> |

| | |
|----------------------------------------------------------------------------------|---------------------------------------------------------------------------------------------------------------------------------------------------------------------------------------------------------------------------------------------------------------------------------------------------------------------------------------------------------------------------------------------------------|
|  | <h2 style="text-align: center;">Art and Design</h2> |
| Curriculum Area | Creative Arts |
| Teachers | Mrs E Bridger ebridger@gvsc.org.uk Miss L Pearn lpearn@fairfield.hereford.sch.uk |
| Course followed | OCR Art and Design |
| What you will study | <p>In year 10 you will be encouraged to explore a variety of starting points and will complete at least three experimental projects. In year 11 you will complete 2 Portfolio Tasks and sit 2 10 hour exams. You will develop creative skills and competence with a wide range of media. This course encourages a personal interest in Art and Design and involves the study of the work of others.</p> |
| How you will be assessed | <p>There is a Portfolio Task and 10 hour practical exam. This takes the form of a learner-set starting point. This is worth 60% of the total marks.</p> <p>There is also an Externally set portfolio task and a 10 hour practical exam worth 40% of the total marks.</p> <p>This GCSE is 100% assessment, as all components are internally marked and externally moderated.</p> |
| You will get the opportunity to | <p>Develop skills and work with traditional and new media and technologies. This course will allow you the opportunity to be an independent learner and a critical and reflective thinker with an enquiring mind.</p> <p>It will allow you to study a variety of different disciplines in Art including Textiles, Fine Art, Photography, Graphic Communication and Three Dimensional Design.</p> |
| Post 16 Courses: Careers: | <p>A Levels, Level 2 Diploma and Level 3 Extended Diploma in Art and Design.</p> <p>There is a very wide range of opportunities within the creative industries.</p> |

| | |
|-----------------------------------------------------------------------------------|--------------------------------------------------------------------------------------------------------------------------------------------------------------------------------------------------------------------------------------------------------------------------------------------------------------------------------------------------------------------------------------------------------------------------------------------------------------------------------------------------------------------------------------------------------------------------------------------------------------------------|
|  | <h2 style="text-align: center;">Design and Technology</h2> |
| Curriculum Area | GCSE Design and Technology |
| Teacher in charge | Mrs R Clarke rclarke@gvsc.org.uk |
| Course followed | AQA Design and Technology |
| What you will study | <p>GCSE Design and Technology will prepare students to participate confidently and successfully in an increasingly technological world. Students will gain awareness and learn from wider influences on Design and Technology including historical, social, cultural, environmental and economic factors. Students will get the opportunity to work creatively when designing and making and apply technical and practical expertise.</p> <p>This GCSE allows students to study core technical and designing and making principles, including a broad range of design processes, materials techniques and equipment.</p> |
| How you will be assessed | 2 Hour Examination (50%) NEA Portfolio Task - Design Folder & Working prototype (50%) |
| You will get the opportunity to | Express your creativity and imagination; show off your design skills and have the freedom to experiment with your own ideas to produce something that really works and improves the lives of others. |
| Post 16 Courses: Careers: | <p>'A' Level and degree courses in Product Design and other related subjects.</p> <p>Working in design and manufacturing fields where understanding the needs of others and being able to produce quality solutions is essential.</p> |



BTEC Pearson Tech Award Level 1/2 in Sport

Curriculum Area

Vocational

Teacher in charge

Mr O Lloyd
olloyd@gvsc.org.uk

Course Followed

Edexcel Pearson Tech Award Level 1/2 in Sport (equivalent to 1 GCSE)

What you will study

You will study Three Components:

Component 1: Preparing Participants to Take Part in Sport and Physical Activity

Component 2: Taking Part and Improving Other Participants Sporting Performance

Component 3: Developing Fitness to Improve Other Participants Performance in Sport and Physical Activity.

How you will be assessed

Components 1 and 2: Internally set task by Pearson that is completed in school. Both components are marked by Mr Lloyd and moderated by Pearson

Component 3: External exam that is set and marked by Pearson.

You will get the opportunity to

Learners will have the opportunity to develop applied knowledge and skills in the following areas:

- investigating provisions for sport including equipment and facilities to enhance sport
- planning and delivery of sport drills and sessions
- fitness for sport including fitness testing and methodology.


Post 16

Courses:

Pearson Level 3 NVQ Diploma in Sports Development or A
level in Physical Education and Leisure Studies

Careers:

Can lead on towards Teacher Training, Coaching, Health and Fitness, Personal training or Sports Therapy

| | |
|-----------------------------------------------------------------------------------|--------------------------------------------------------------------------------------------------------------------------------------------------------------------------------------------------------------------------------------------------------------------------------------------------------------------------------------------------------------------------------------------------------------------------------------------------------------------------------------------------------------------------------------------------------------------------------------------------------------------------------------------------------------------------------------------------------------------------------------------------------------------------------------------------------|
|  | <h2 style="text-align: center;">BTEC Tech Award in Animal Care (2022)</h2> |
| Curriculum Area | Vocational |
| Teacher in charge | Mr N Jarrold njarrold@gvsc.org.uk |
| Course Followed | Edexcel BTEC Tech Award in Animal Care (equivalent to 1 GCSE) |
| What you will study | <p>You will study three components:</p> <p>Component 1: Animal Handling Learners develop their animal handling skills and gain an understanding of the principles of animal behaviour, enabling them to handle and restrain animals safely.</p> <p>Component 2: Animal Housing and Accommodation Learners develop their understanding of the accommodation and housing requirements of animals by carrying out the preparation, checking and cleaning out of animal accommodation.</p> <p>Component 3: Animal Health and Welfare Learners develop their understanding of how looking after animals' wellbeing helps maintain their strength and vigour, as well as exploring how animals are used in society and how they are protected by legislation.</p> |
| How you will be assessed | 30% of this course will be assessed by an external 'paper based' (in other words not online) written exam. The remainder of the course is examined through internally set assignments which are then moderated by an external verifier from the exam board. There are strict assignment deadlines which must be met for these internally assessed pieces of work. |
| You will get the opportunity to | Work closely with and care for a variety of domestic and exotic animals; work as part of a team; learn to work more independently, preparing you for the many demands of higher and further education. Visit animal establishments such as Bristol Zoo, Cotswold Wildlife Park, and working agricultural settings. |
| <p>Post 16</p> <p>Courses:</p> <p>Careers:</p> | <p>The qualification will provide a sound basis for progression for those students who wish to study a related qualification at level 3, such as BTEC Animal Management or an apprenticeship. The applied knowledge of biology, which underpins this qualification, will also support study of A level Biology.</p> <p>BTECs are qualifications designed to provide specialist work-related skills in a range of sectors. They give learners the knowledge, understanding and skills that they need to prepare for future employment, for example as a vet, veterinary nurse, blacksmith, farmer, zoo keeper, groom.</p> |



Performing Arts (Drama)

| | |
|------------------------------------------------|-----------------------------------------------------------------------------------------------------------------------------------------------------------------------------------------------------------------------------------------------------------|
| Curriculum Area | English / Vocational |
| Teacher in charge | Mrs J Parsons iparsons@gvsc.org.uk |
| Course followed | BTEC Tech Award in PERFORMING ARTS (Drama) |
| What you will study | You will study three units: Unit 1: Exploring the Performing Arts Unit 2: Developing Skills and Techniques in the Performing Arts Unit 3: Responding to a Brief |
| How you will be assessed | Units 1 and 2 contribute 60% of the course and are set and marked internally by subject staff with the work externally moderated. Unit 3 is worth 40% of the course and assessed through an external task that is set and marked by the exam board. |
| You will get the opportunity to | <ul style="list-style-type: none"> • Go on theatre visits • Work as part of a team • Write about theatre • Use a range of explorative strategies • Learn how to confidently present yourself in public |
| Post 16 Courses: Careers: | A-level Drama and Theatre Studies BTEC Performing Arts Level 3 Actor, Director, Technical Stage Crew, Stage Management, Costume Design |



Construction: Pearson BTEC Level 1/Level 2 Tech Award in Construction and the Built Environment

| | |
|----------------------------------------|--------------------------------------------------------------------------------------------------------------------------------------------------------------------------------------------------------------------------------------------------------------------------------------------------------------------------------------------------------------------------------------------------------------------------------------------------------------------------------------------------------------------------------------------------------------------------------------------------------------------------------------------------------------------------------------------------------------------------------------------------------------------------------------------------|
| Curriculum Area | Vocational |
| Teacher in charge | Mrs Clarke rclarke@gvsc.org.uk |
| Course followed | This course will give you the opportunity to develop knowledge and technical skills in a practical learning environment. You will develop your knowledge of construction methods, materials and design, applying mathematical and scientific principles to solve problems in a construction context. You will also develop key skills, such as planning work, interpreting technical information and designing to meet a client brief. You will get the opportunity to apply hand skills, safely use tools, measure and check the quality of work completed. |
| What you will study | Units: Unit 1 (Theory Exam) Construction technology: Understanding common types of construction used to build low rise buildings, material technologies and the essential maths and science that Designers and Builders use day-to-day, sustainability and how buildings' sub-structures and superstructures are constructed. Unit 2 Carpentry skills: covering the principles of safe working, selecting and using materials and tools, planning work in trades in carpentry and evaluating the quality of work produced. Unit 3 Technical Drawing/CAD: exploring how the design of different buildings can meet their function, and how to practically design buildings to meet the needs of the clients and the environment, including the various constraints on the design. |
| How you will be assessed | This course is assessed through a combination of internal and external assessment: Unit 1 will be externally assessed via a 1.5 hour written examination; Units 2 & 3 will be internally assessed via Controlled Assessment Tasks (CATs). Grading is Pass, Merit or Distinction/Distinction*. |
| You will get the opportunity to | Work as part of a team, gaining practical experience of the construction (carpentry) trade. Use problem-solving skills to work to a client's brief to design a building using hand drawn skills as well as CAD (Computer Aided Design). |



Textiles

| | |
|-----------------------------------------------------------------|--------------------------------------------------------------------------------------------------------------------------------------------------------------------------------------------------------------------------------------------------------------------------------------------------------------------------------------------------------------------------------------------------------------------------------------------------------------------------------------------------|
| Curriculum Area | Expressive Arts |
| Teachers | <p>Miss L Pearn – Head of Expressive Arts Faculty lpearn@fairfield.hereford.sch.uk</p> <p>Mrs E Bridger – Art Teacher ebridger@gvsc.org.uk</p> |
| Course followed | AQA Textiles |
| What you will study | <p>In year 10 you will be encouraged to explore a variety of starting points and will complete 2 projects that will all be assessed as part of your final GCSE grade. In year 11 you will complete 2 portfolio tasks and sit x 2 10 hour practical exams. You will develop creative skills and competence within areas of creative textile and design. This course encourages a personal interest in Textiles and Design and involves the study of the work of other creative practitioners.</p> |
| How you will be assessed | <p>There are x 2 Portfolio Tasks and 10 hour practical exam. This takes the form of a learner-set starting point. This is worth 60% of the total marks.</p> <p>There is also an Externally set portfolio task and a 10 hour practical exam worth 40% of the total marks.</p> <p>This GCSE is 100% assessment, as all components are internally marked and externally moderated.</p> |
| You will get the opportunity to | <p>Develop skills and work with different textile techniques to make a functional response or non-functional. This course will allow you the opportunity to be an independent learner and a critical and reflective thinker with an enquiring mind.</p> <p>Within the course you can explore, art textiles, fashion design and illustration, costume design, constructed textiles, printed and dyed textiles, surface pattern, stitched and/or embellished textiles.</p> |
| Post 16 Courses: Careers | <p>A Levels,</p> <p>Foundation, Level 2 Diploma and Level 3 Extended Diploma in Art and Design.</p> <p>There is a very wide range of opportunities within the creative industries.</p> |



Key Skills Certificate

| | |
|----------------------------------------|---------------------------------------------------------------------------------------------------------------------------------------------------------------------------------------------------------------------------------------------------------------------------------------------------------------------------------------------------------------------------------------------------------------------------------------------------------------------------------------------------------------------------------------------------------------------------------------------------------------------------------------------------------------------------------------------------------------------------------------------------------------------------------------------|
| Curriculum Area | Vocational |
| Teacher in charge | Mr Lloyd olloyd@gvsc.org.uk |
| What you will study | <p>Students will undertake a range of Nationally approved qualifications based around the development of personal, social and employability skills.</p> <p>There may be opportunities for off-site visits and activities.</p> |
| How you will be assessed | <p>Students will create a portfolio of evidence across a range of topics and curriculum areas. The work will be internally marked and externally moderated.</p> <p>These are mostly Level 1 courses (up to Grade 3).</p> |
| You will get the opportunity to | <p>Develop a range of skills that will be invaluable when you start work and begin independent lives. Students will develop their ability to work as part of a team, learn how to cope and overcome problems and develop their Maths, English and IT skills.</p> <p>Students will explore the following throughout the course</p> <ul style="list-style-type: none"> - LifeSkills. (Employability skills, building financial confidence and preparing them for the workplace) - Sports Leadership and Personal Fitness - Forest Schools, Community Projects and Outdoor Learning - Food, Nutrition and Hygiene - Construction and Maintenance - First Aid - ICT - Additional Exam, Study and Revision Support |



FAIRFIELD
HIGH SCHOOL




Ofsted
Outstanding

2006 2009 2013

Fairfield High School
Peterchurch
Herefordshire
HR2 0SG

01981 550 231
admin@fairfield.hereford.sch.uk

www.fairfield.hereford.sch.uk